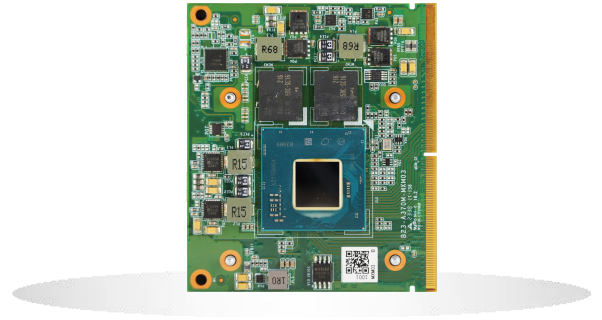


MXM03 Specification



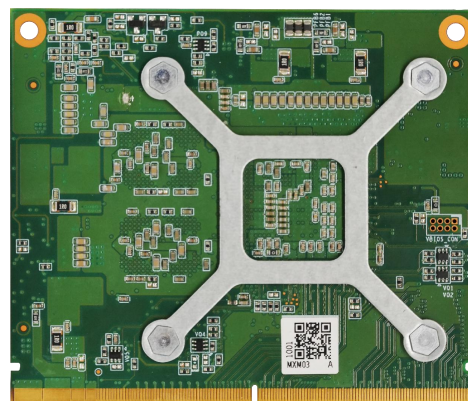
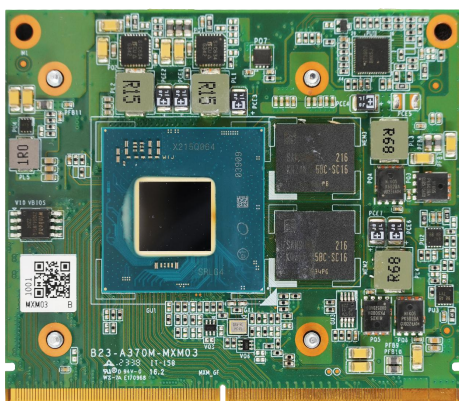
Overview

Decenta MXM module takes advantage of Intel® Arc™'s hardware ray tracing and dedicated AI acceleration to support up to four 4K displays for improved responsiveness, accuracy and reliability. Based on Intel® Arc™ A370M, the MXM module has up to eight Xe ray tracing cores, 128 execution units, 4GB GDDR6 memory, 112GB/s bandwidth, and supports 8x PCIe 4.0. More importantly, it is the industry's first graphics card to include full AV1 hardware coding, which is 4.4 times faster than traditional software.

- MXM(3.1) Type-A graphics module based on Intel® Arc™ A370M.
- Support AV1 hardware encoding.
- 4 Independent Displays(Combination of 2DP, 1HDMI®, 1LVDS/eDP).
- Support up to 8 Xe ray tracing cores, 128 execution units.



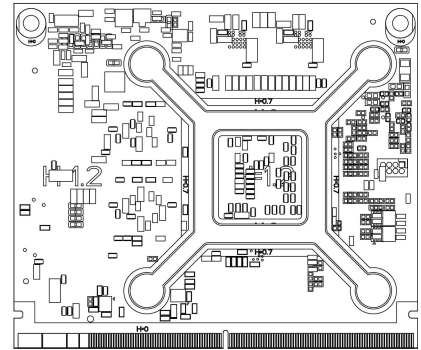
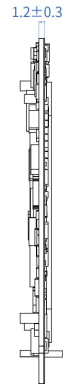
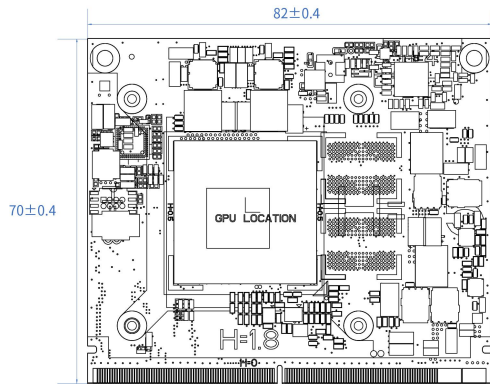
I/O Overview



Specifications

Model	B23-A370M-MXM03
GPU Platform	Intel® A370M
Graphic Clock	1550MHz
Architecture	Xe HPG
Memory Interface	64bit
Memory	4G GDDR6
Memory Speed	Up to 14Gbps
TGP	35W-50W
Target PCB	8L
Type	MXM Type-A
Display Connectors	4x DP

Dimensions (Unit: mm)



*Specifications and information contained in this document are furnished for informational use only, and are subject to change at any time without notice, and should not be construed as a commitment by Decenta.